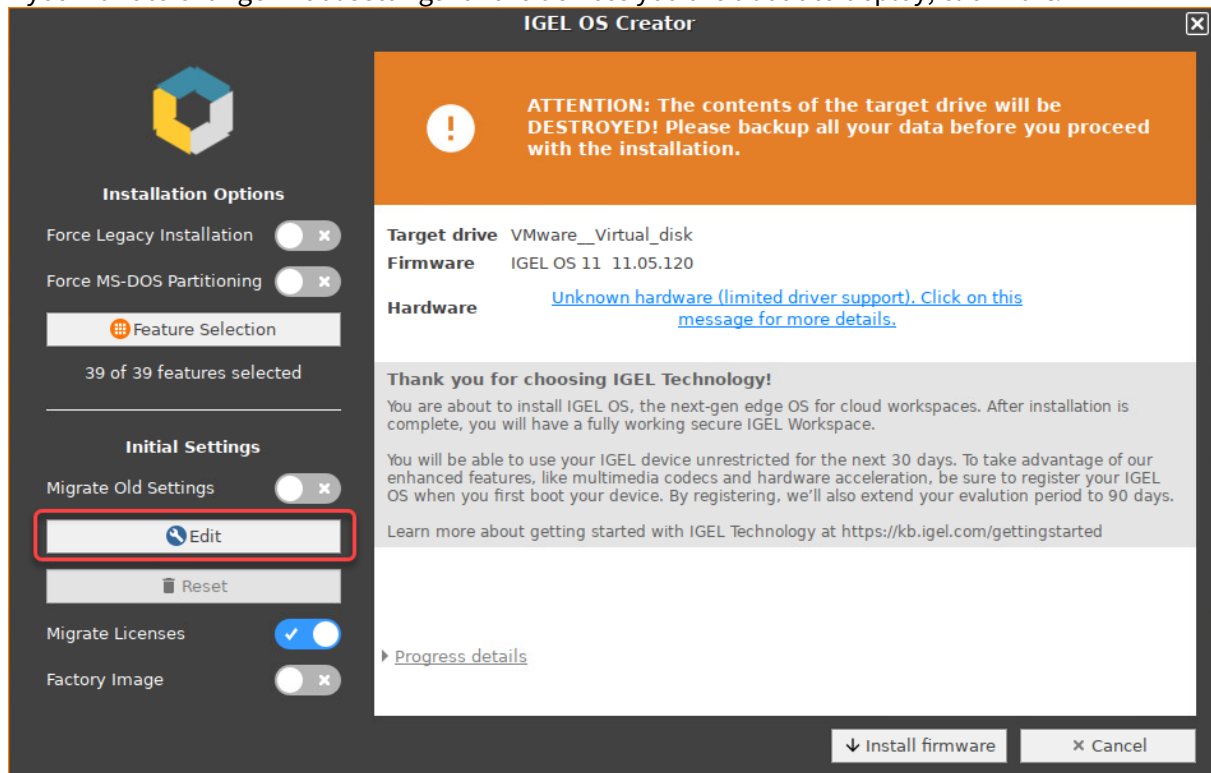




8. If you want to change initial settings for the devices you are about to deploy, click **Edit**.

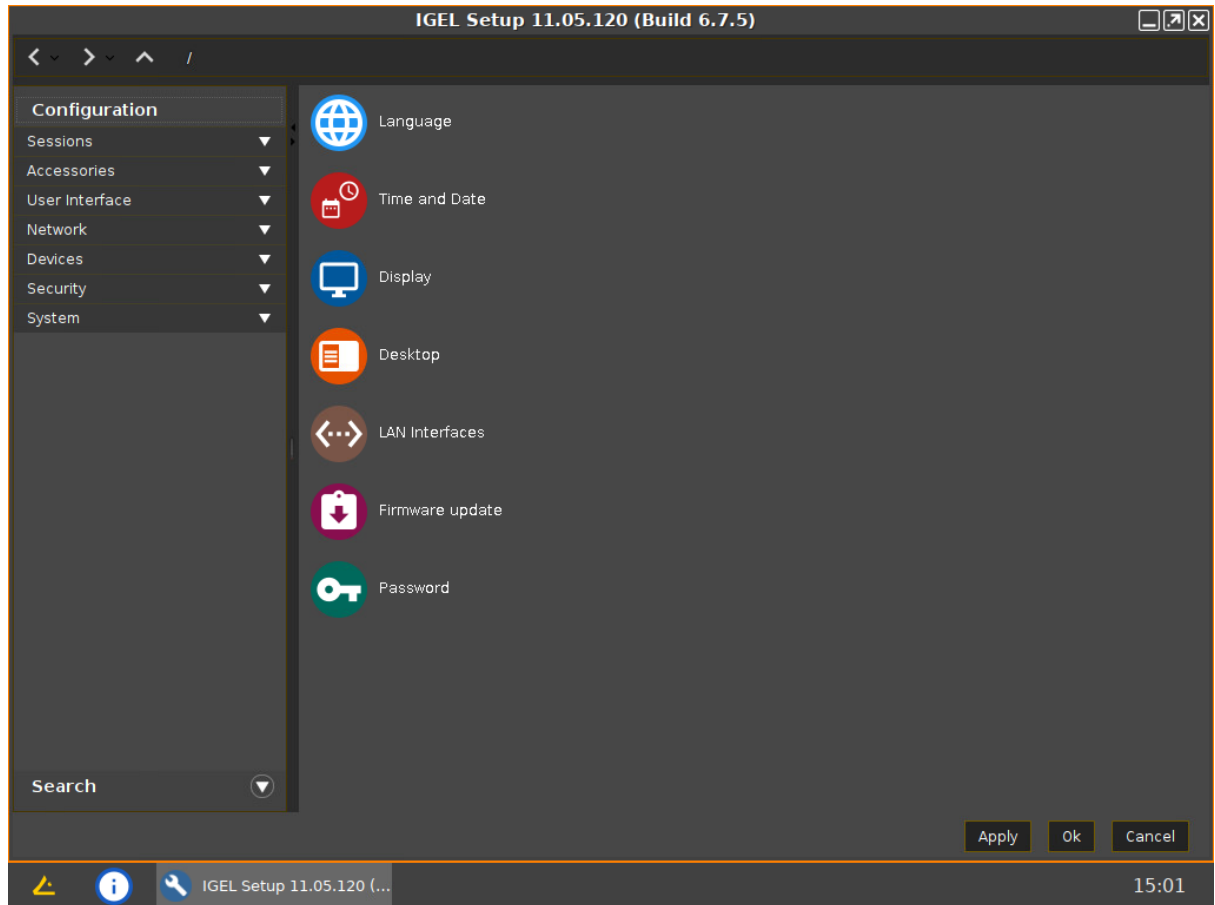


The IGEL Setup opens, enabling you to change the settings in the same way as with a regular IGEL OS installation.

- ✓ The changes are stored on the USB memory stick from which the IGEL OS Creator (OSC) is executed. When you use this USB memory stick for subsequent OSC installations, your custom settings will be re-used. This allows you to easily create a number of IGEL OS installations with custom settings.

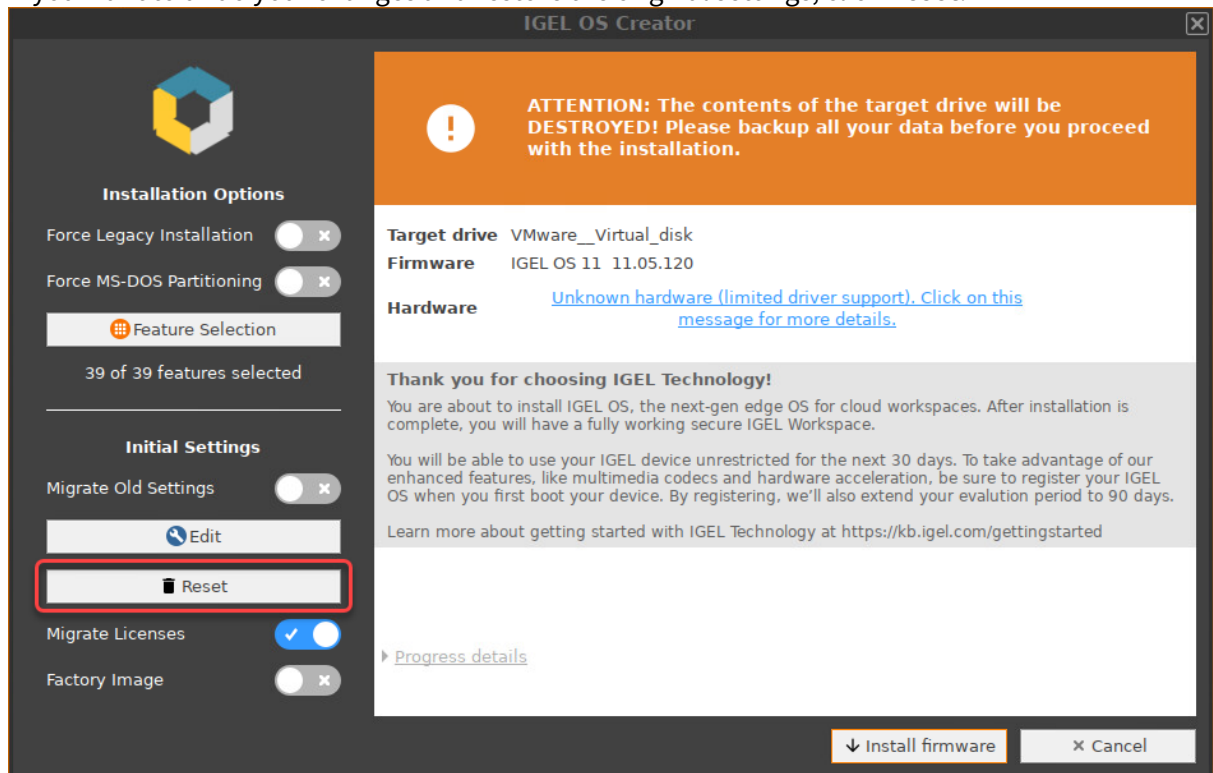


For details about the settings, see the chapters Setup and the subsequent chapters in the IGEL OS Reference Manual.

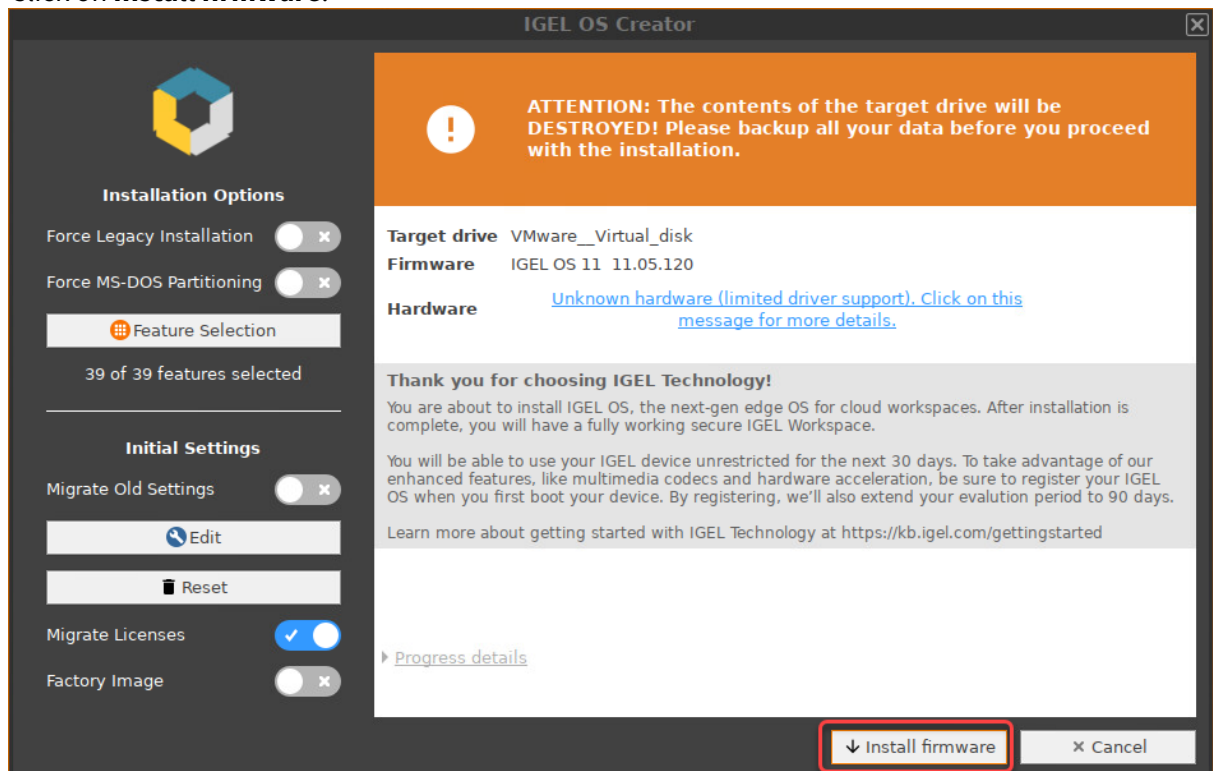




- If you want to undo your changes and restore the original settings, click **Reset**.

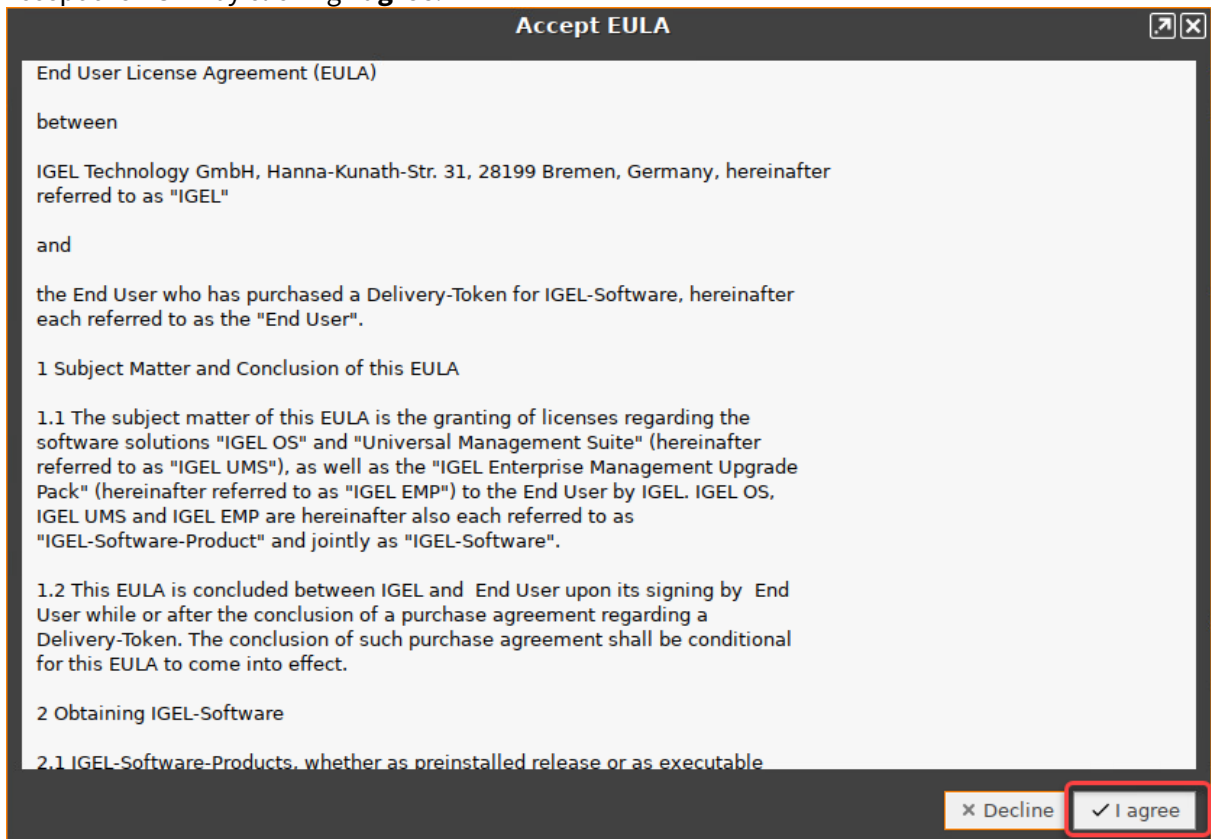


- Click on **Install firmware**.

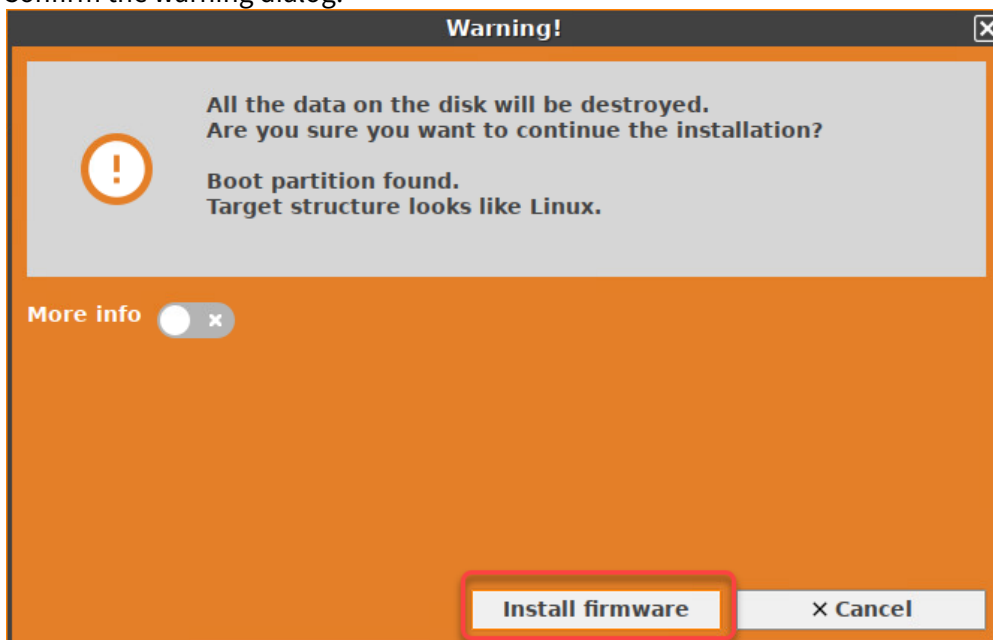




11. Accept the **EULA** by clicking **I agree**.



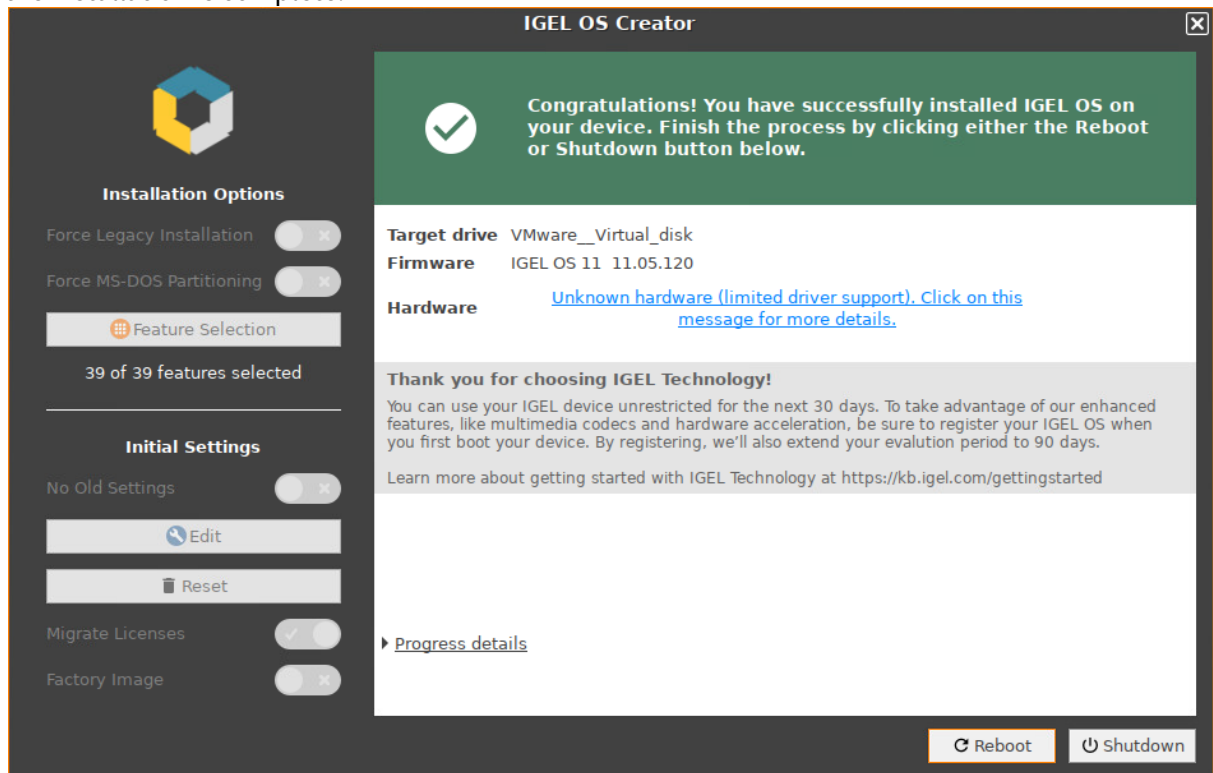
12. Confirm the warning dialog.



The installation program will install IGEL OS 11 on the target drive. If you see the success message,



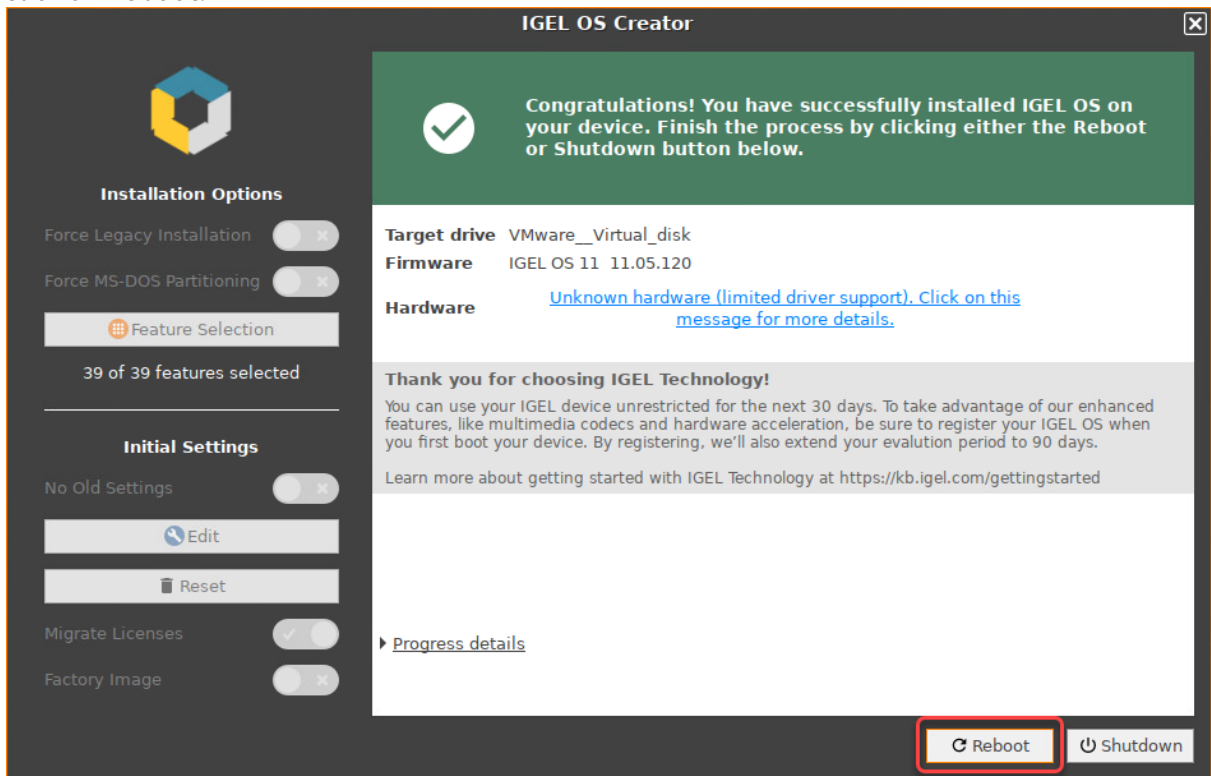
the installation is complete.



13. Detach any external network adapters from the device.
In this way, you ensure that the unit ID for the device is derived from the built-in network adapter. The unit ID will be saved on the device persistently, regardless of any external network adapter that may be used in the future. This is important for licensing.

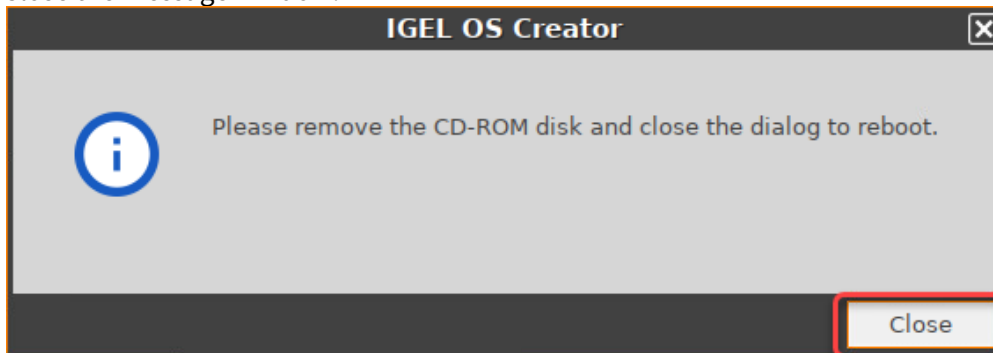


14. Click on **Reboot**.



15. Remove the USB memory stick.

16. Close the message window.



The system will shut down and then boot IGEL OS 11.